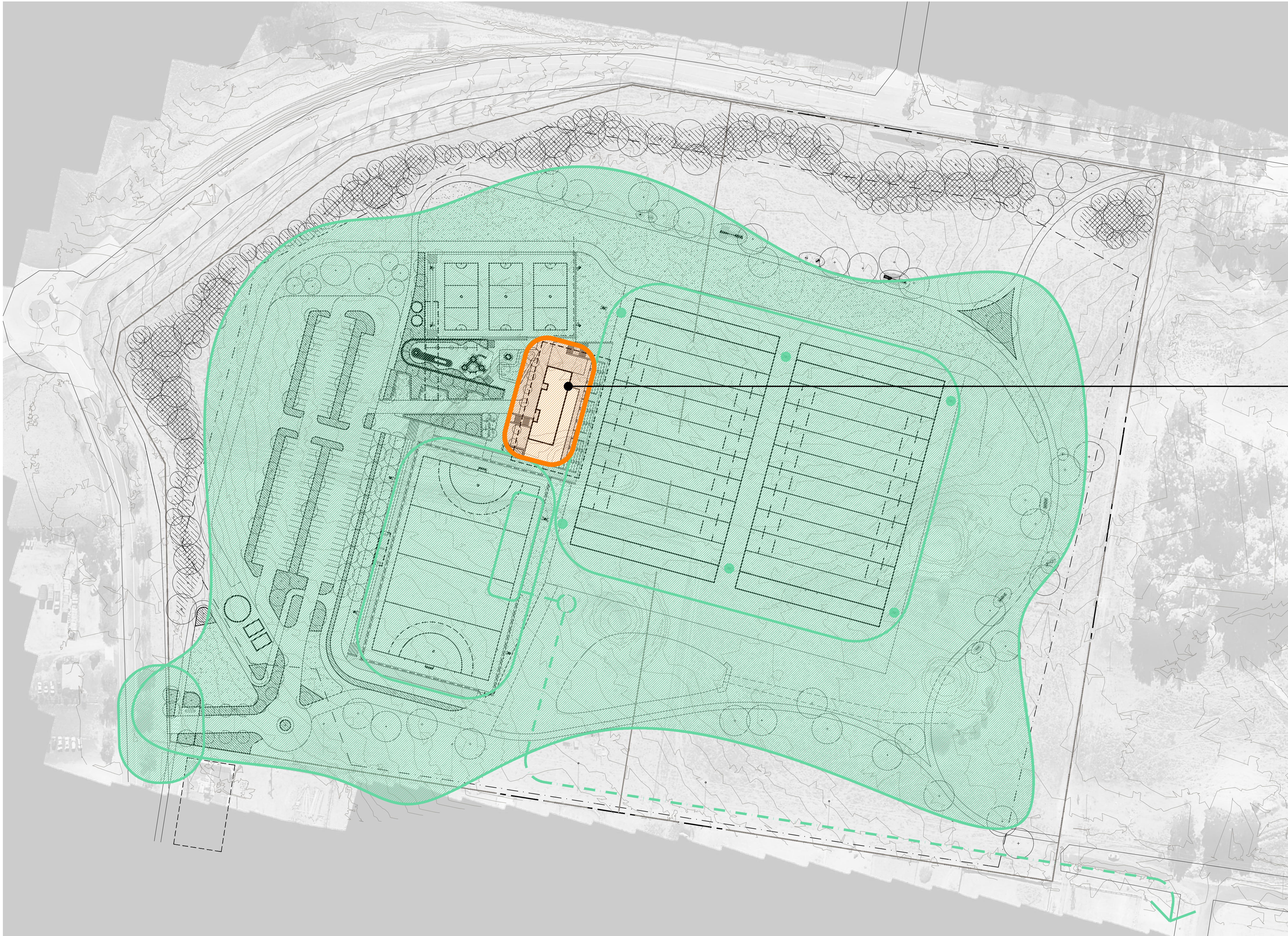


**KEY - STAGE 1**

- 1a EARTHWORKS (INCLUDING SITE DRAINAGE & OSD)
- 1b SPORTING FIELDS & LIGHTING
- 1c TEMPORARY CARPARK 146 SPOTS
- 1d TEMPORARY AMENITIES & CHANGE ROOMS
- 1e SEWER & PUMP-OUT STATION
- 1h TEMPORARY CARPARK ACCESS ROAD
- 1f NEW SITE ACCESS ROAD INTERSECTION
- 1g SEWER LINE

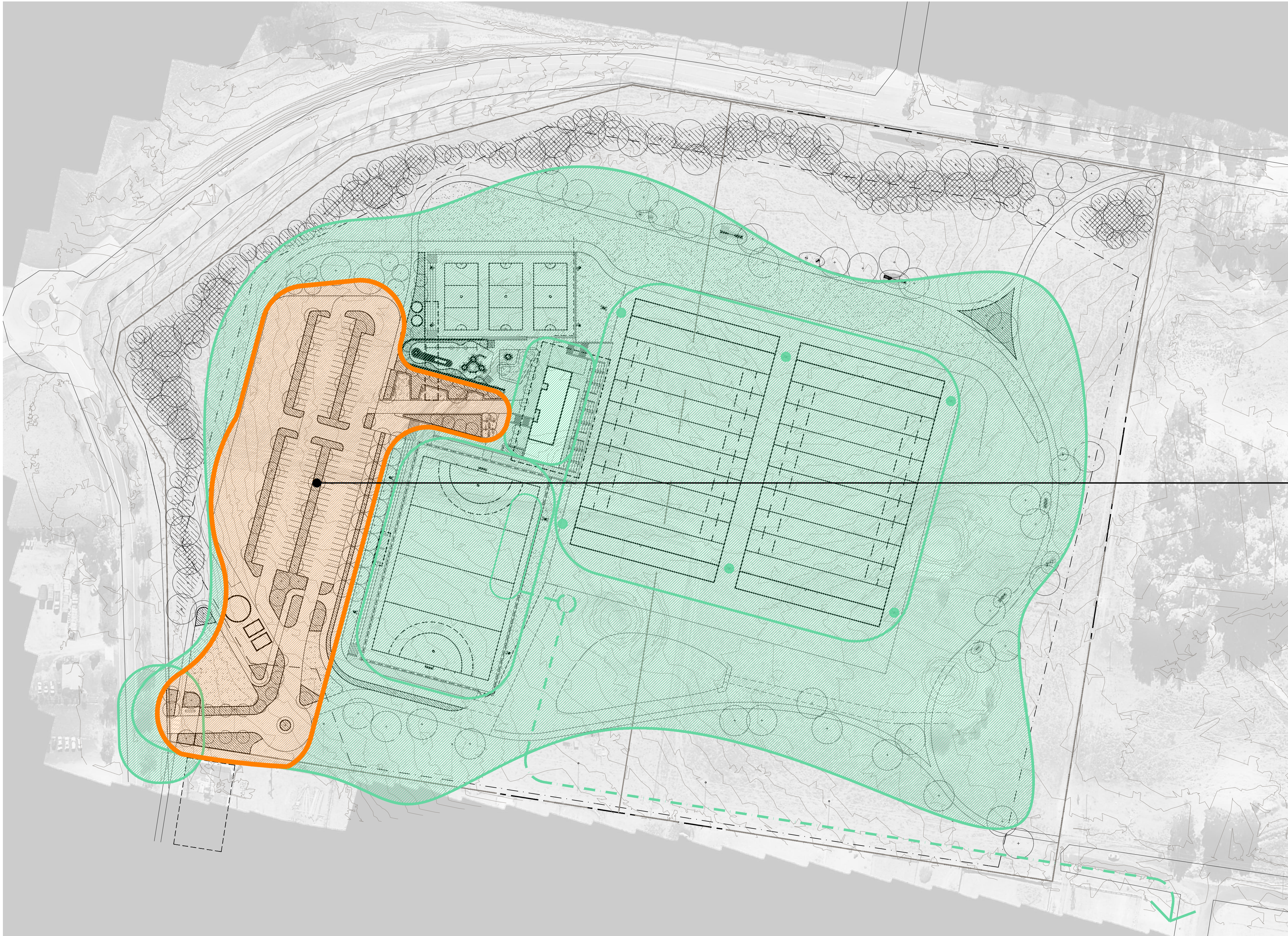




KEY - STAGE 2

NEW CLUB HOUSE

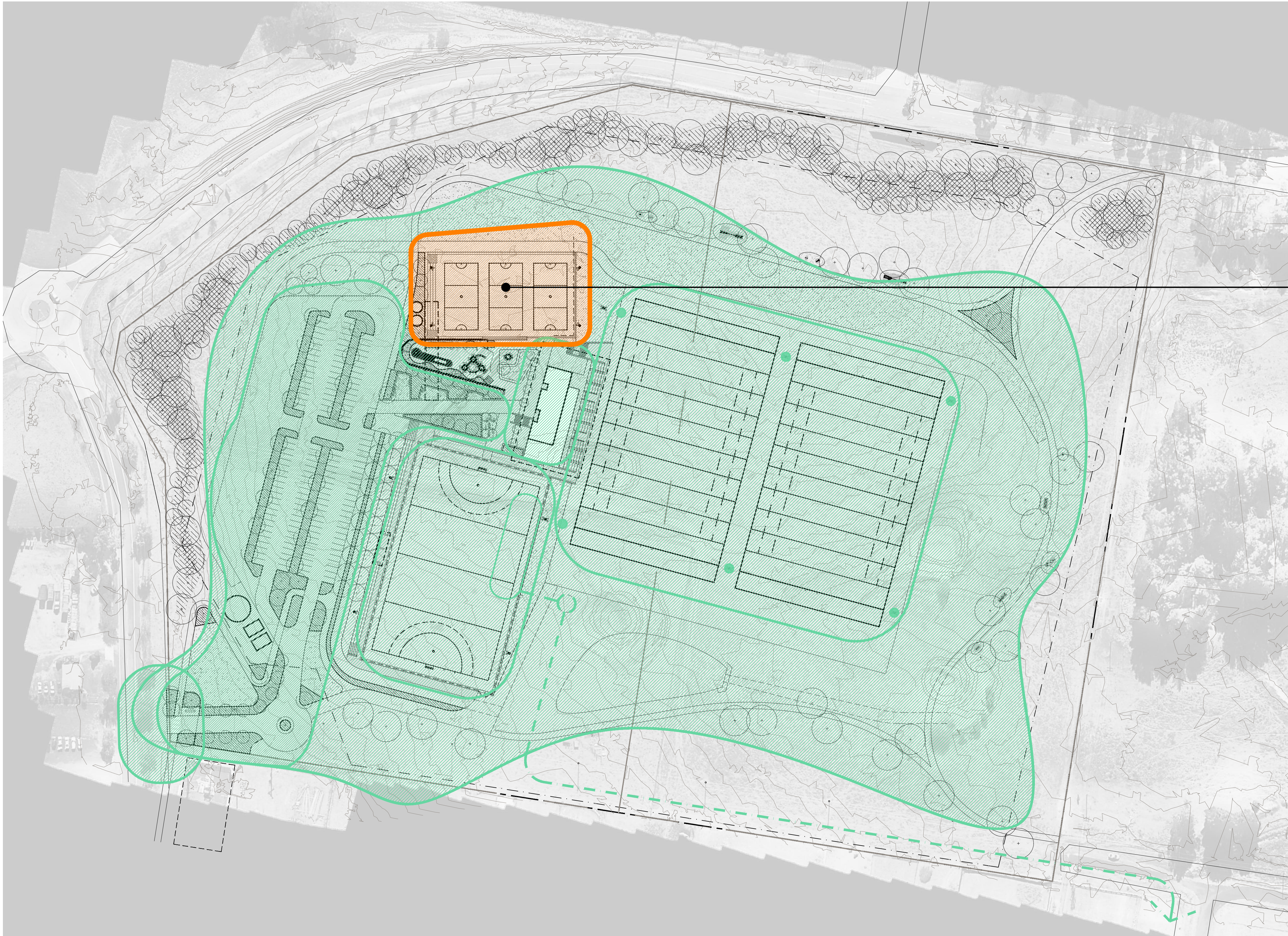




KEY - STAGE 3

NEW CARPARK  
146 SPOTS

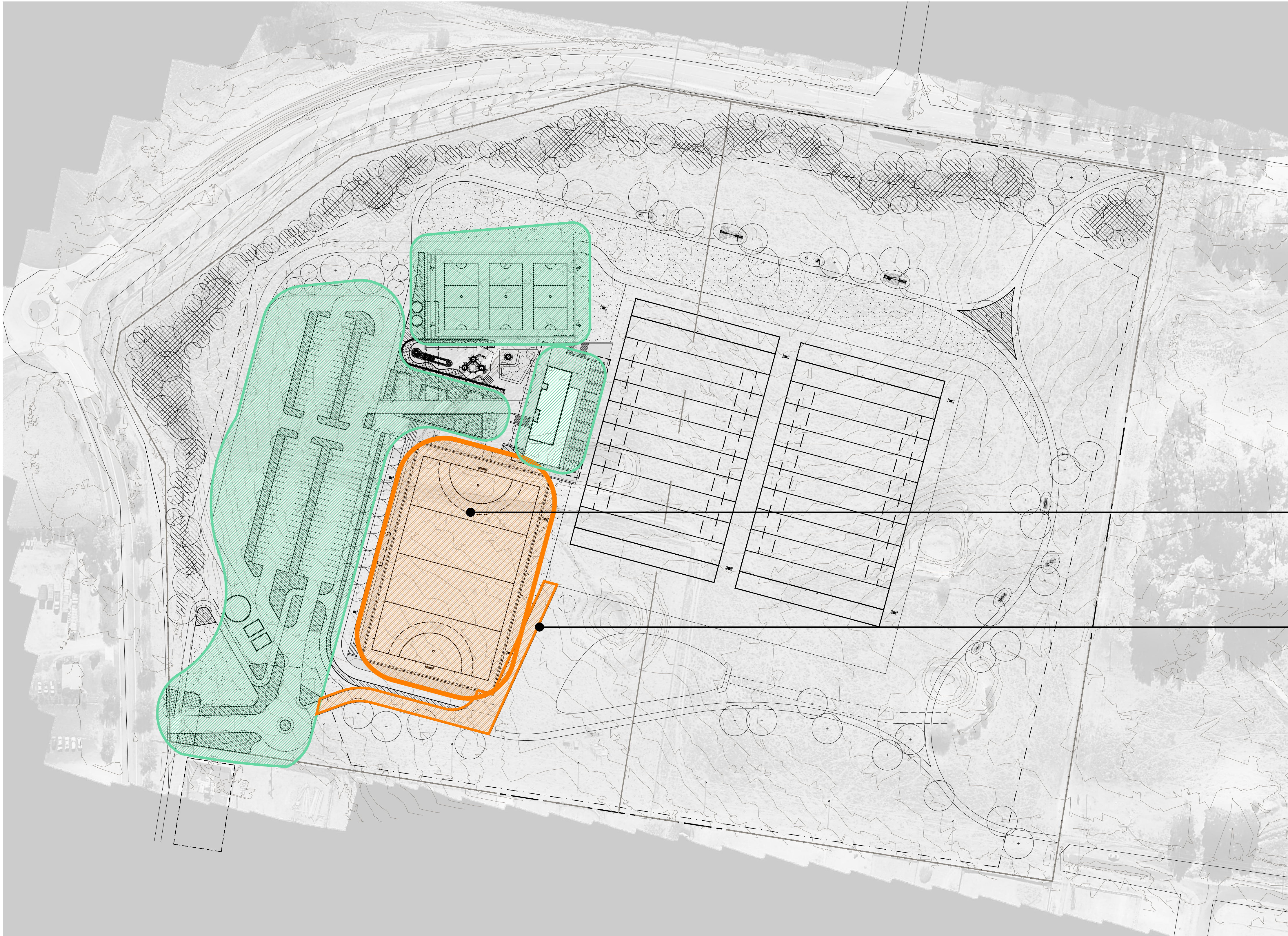




KEY - STAGE 4

NETBALL COURTS



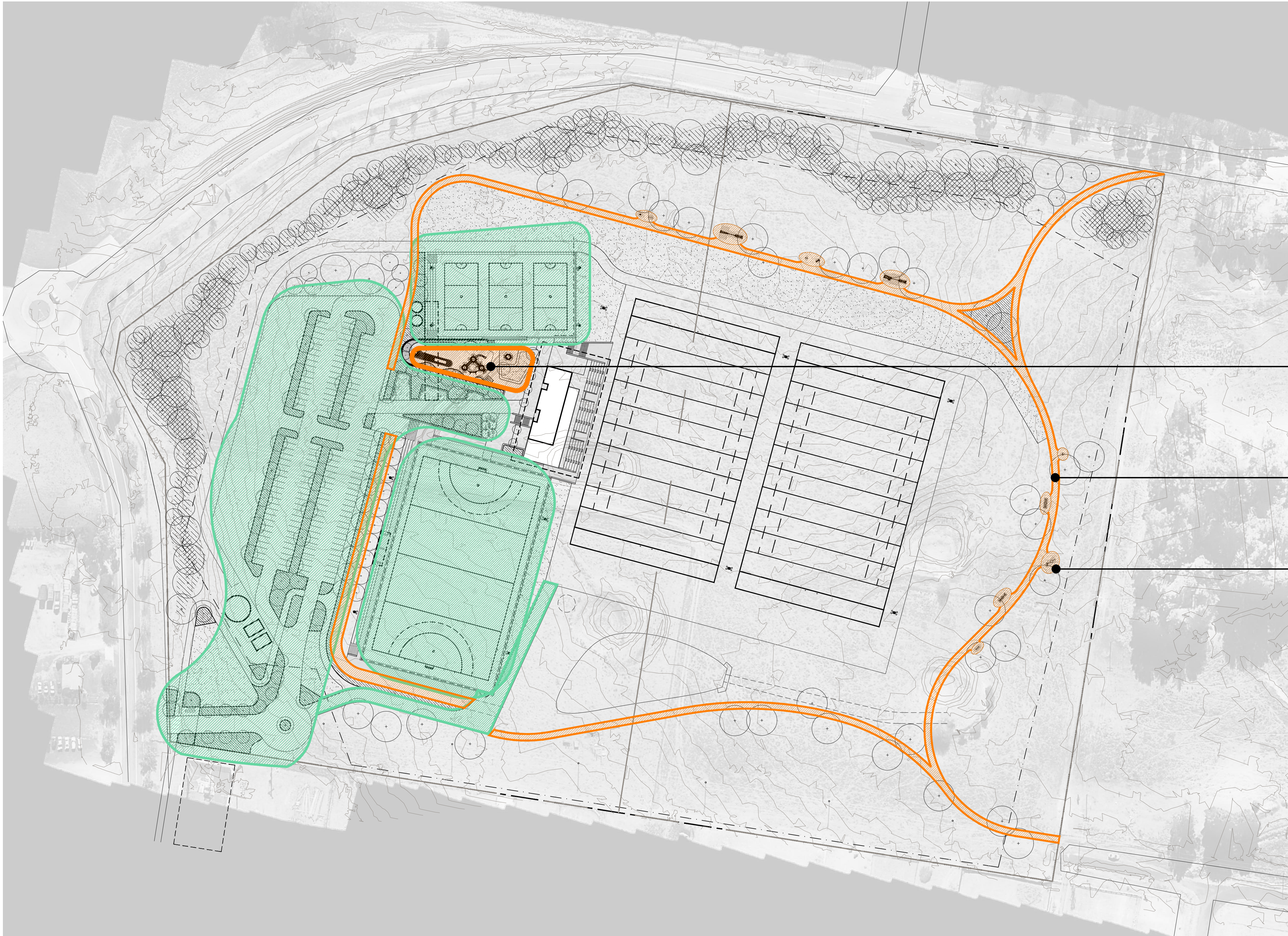


KEY - STAGE 5

5a NEW HOCKEY FIELD

5b FORMALISED FIELD ACCESS





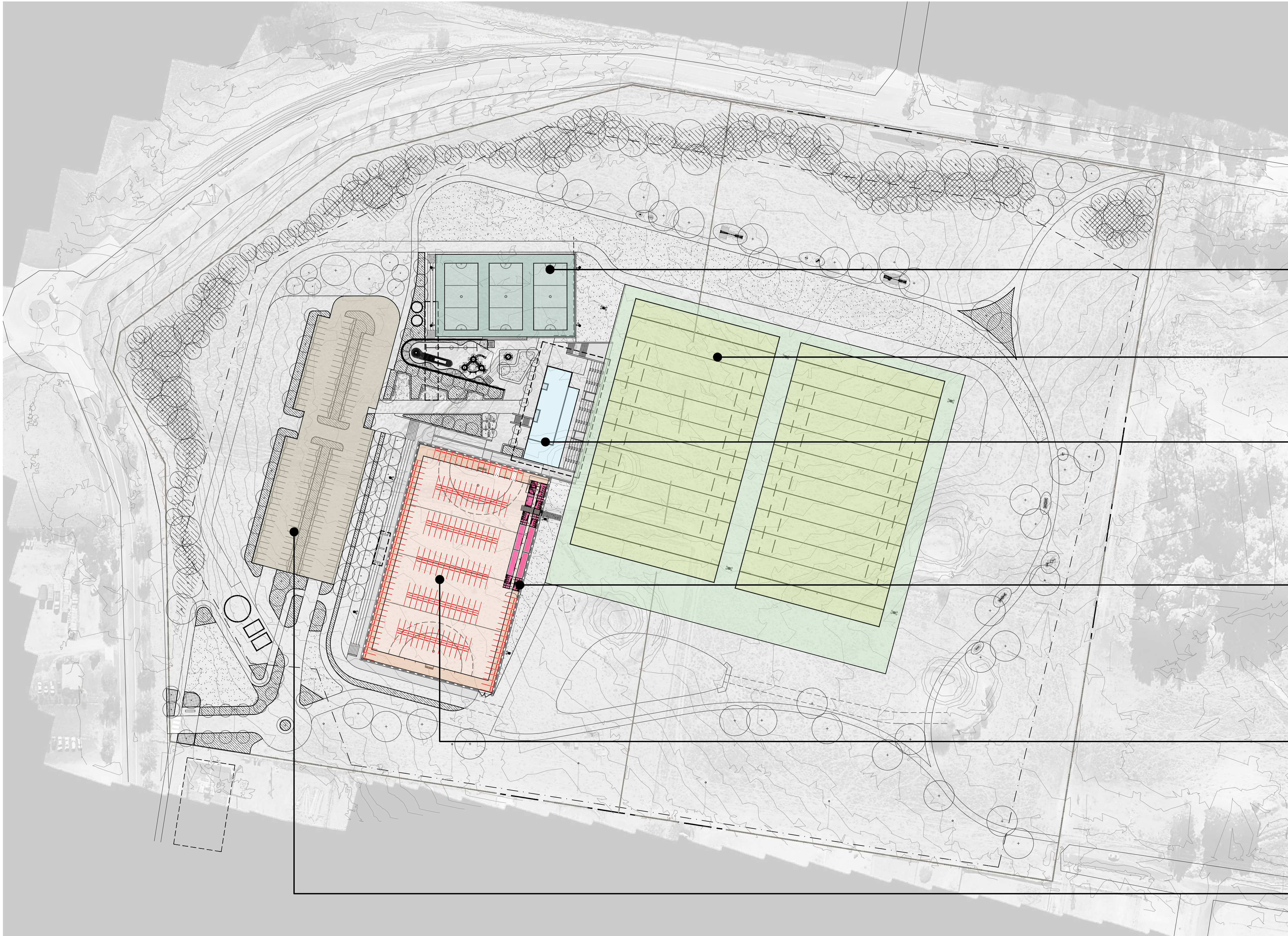
KEY - STAGE 6

6a PLAYGROUND

6b PATHWAYS

6c FITNESS STATIONS

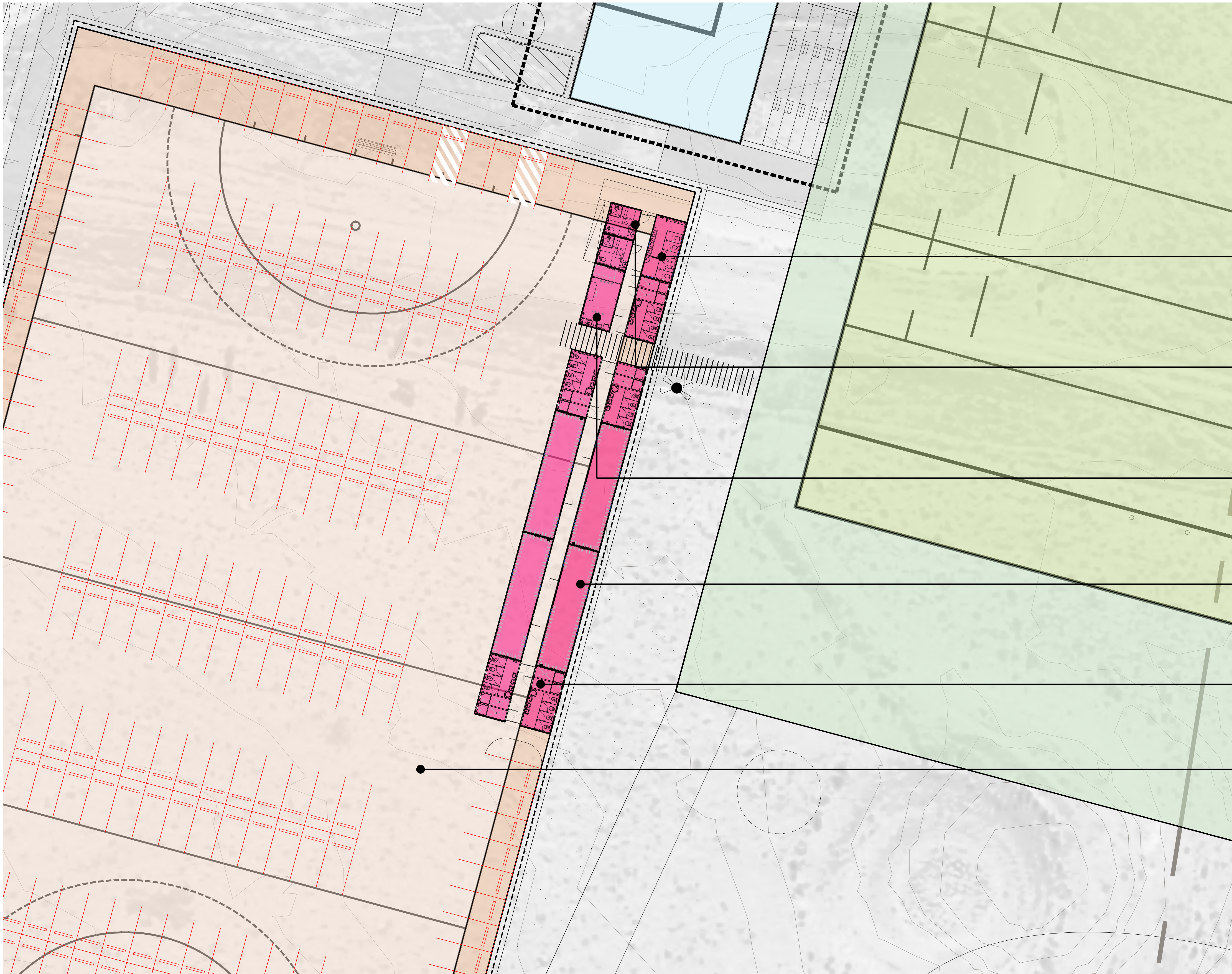




KEY - AREAS

NETBALL COURT AREA	2,389m <sup>2</sup>
PLAYING SURFACE	1,395m <sup>2</sup>
COURT OVERRUN	994m <sup>2</sup>
RUGBY LEAGUE FIELDS	22,685m <sup>2</sup>
PLAYING SURFACE	15,776m <sup>2</sup>
COURT OVERRUN	6,909m <sup>2</sup>
NEW CLUB HOUSE:	
LOWER LEVEL	400m <sup>2</sup>
GROUND LEVEL	629m <sup>2</sup>
REGISTERED CLUB	538m <sup>2</sup>
TEMP. AMENITIES & CHANGE ROOMS	364m <sup>2</sup>
REFER TO DWG 51	
HOCKEY FIELD & TEMPORARY CARPARK	6,185m <sup>2</sup>
PARKING SPOTS	197
PLAYING SURFACE	5,027m <sup>2</sup>
COURT OVERRUN	1,158m <sup>2</sup>
CARPARK	4,762m <sup>2</sup>
PARKING SPOTS	146





\*TEMPORARY FACILITIES BY  
AUSCO MODULAR Pty Ltd  
(NEWCASTLE BRANCH)

KEY - AREAS

- AUSCO MALE & FEMALE TOILET (3+2) 6x3m
- AUSCO ACCESSIBLE ABLUTION (2x) 3x3m
- AUSCO FIRST AID 6x3m
- AUSCO CHANGE ROOM (4x) 6x3m
- AUSCO ABLUTION BLOCK (5x) 6x3m
- HOCKEY FIELD & TEMPORARY CARPARK  
PARKING SPOTS 197

\*200mm THICK OF 20mm DENSELY  
GRADED BASE (DGB) ROLLED AND  
COMPACTED

